



# **GWYNEDD MERCY UNIVERSITY** *welcomes* *CABRINI UNIVERSITY students*

*As another mission-centered institution that is similar in size, location, and program offerings, we are honored to serve as **a preferred partner with Cabrini** and will do all that we can to ensure Cabrini students who want to complete their degrees at Gwynedd Mercy University have a smooth transition.*

## **When you transfer to GMercyU, we will:**

- Accept your Cabrini undergraduate credits for transfer into an equivalent program at GMercyU
- Match your financial aid package so your out-of-pocket costs remain the same
- Waive the admissions application essay
- Keep you on track to graduation within your expected time

### **Transfer Tuesdays Drop-In Zoom**

**Every Tuesday**  
10 a.m.-noon or 1-4 p.m.

Learn more at [gmercyu.edu/visit](https://gmercyu.edu/visit)

### **In-Person Visit**

A GMercyU Admissions Counselor will be on Cabrini's Campus most Tuesdays in the Fall.

Visit [gmercyu.edu/cabrinitransfers](https://gmercyu.edu/cabrinitransfers) for a list of dates and times.



**215-641-5510**

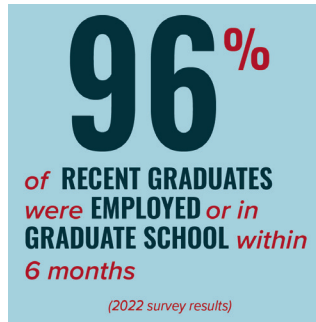
[gmercyu.edu/cabrinitransfers](https://gmercyu.edu/cabrinitransfers)







## Now Is a Great Time To Be a Griffin



### Top Marks

Students rate GMercyU significantly higher for “providing support for your overall well-being”  
(National Survey for Student Engagement, 2022)

### Unlimited Access

- Tutoring
- Counseling
- Health and Wellness
- Other Student Support Services

### Coming Soon

Frances M. Maguire Healthcare Innovation Center

- State-of-the-market technology
- Interprofessional learning
  - Learn alongside psychology, social work, occupational therapy, respiratory care, nursing, and other majors to provide holistic, compassionate care in the Mercy tradition



### Join Us in Making a Difference

for yourself and for others

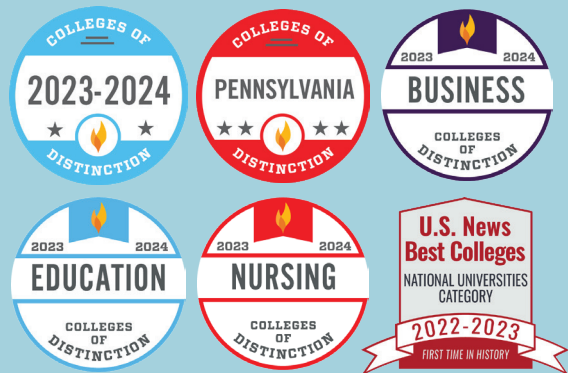
### Core Values

**Integrity** in word and deed

**Respect** for the dignity of each person

**Service** to society

**Social Justice** in a diverse world



**MERCY** *Makes the DIFFERENCE*